

## Anti-EGFR (Her1) monoclonal antibody

Cat # SG\_1002 (only for reagent use)

EGFR (Epidermal Growth Factor Receptor) belongs to ErbB family of receptor tyrosine kinases. This trans-membrane protein is generally activated by EGF-family of proteins. Uncontrolled activation is involved in the pathogenesis and progression of different cancer types. Cell surface expression of EGFR can be detected by Flow cytometry and ELISA.

**Source:** Selection on recombinant human ECD (aaL25-S645) antigen protein using Phage display technology.

**Isotype:** Human IgG Kappa with human Fc.

**Purification:** Affinity purified.

**Concentration:** 25ug per vial.

**Storage:** Antibody in 20% glycerol-PBS. Store at -20C

**Species cross reactivity:** Not tested.

**Tested applications:** Flow cytometry, IF, ELISA and IP.

### Recommended dilutions:

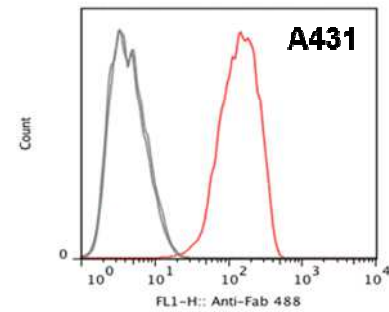
FACS – 1:1000

ELISA - 1: 500

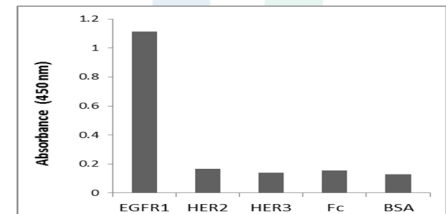
IP - 1:100

IF - 1:1000

Actual dilution should be determined by the end user.



FACS analysis of SGH\_1002 antibody on A431 cells (Red line).



ELISA analysis of SGH\_1002 antibody on A431 cell lysate.