

## Anti-human Her2 monoclonal antibody

Cat # SGH\_1003 (For research use only)

Her2/EGFR2 (Epidermal Growth Factor Receptor 2) belongs to ErbB family of receptor tyrosine kinases. This trans-membrane protein is generally activated by EGF-family of proteins. Uncontrolled activation is involved in the pathogenesis and progression of a sector of breast cancer. Cell surface expression of Her2 can be detected by Flow cytometry and ELISA.

**Source:** Selection on recombinant human ECD (aaT23-T652) antigen protein using Phage display technology

**Isotype:** Human IgG Kappa with human Fc.

**Purification:** Affinity purified.

**Concentration:** 25ug per vial.

**Storage:** Antibody in 20% glycerol-PBS. Store at -20C

**Species cross reactivity:** Not tested.

**Tested applications:** Flow cytometry, IF, ELISA and IP.

**Recommended dilutions:**

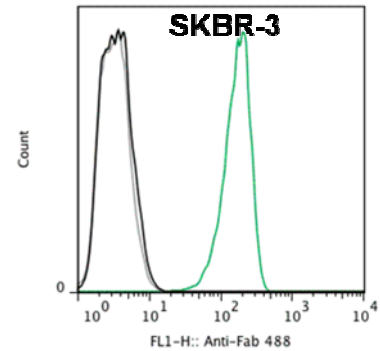
FACS – 1:1000

ELISA - 1: 500

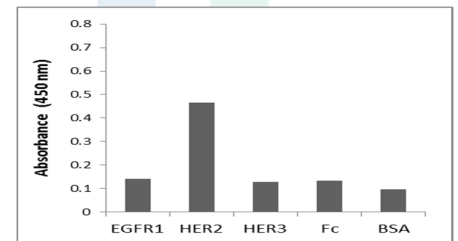
IP - 1:100

IF - 1:1000

Actual dilution should be determined by the end user.



FACS analysis of SGH\_1003 antibody on SKBR3 cells (Greenline).



ELISA analysis of SGH\_1003 antibody on SKBR3 cell lysate.