

Anti-human Her3 monoclonal antibody

Cat # SGH_1004 (For research use only)

Her3 antigen, is a membrane bound protein encoded by the ERBB3 gene. The protein lacks active kinase domain and hence form heterodimers with other EGF receptor family, leading to activation of pathways involved in cell proliferation and differentiation. Amplification of this gene and/or overexpression of its protein have been reported in numerous cancers, including prostate, bladder, and breast tumors.

Source: Selection on recombinant human ECD (aaS20-T643) antigen protein using Phage display technology

Isotype: Human IgG Kappa with human Fc.

Purification: Affinity purified.

Concentration: 25ug per vial.

Storage: Antibody in 20% glycerol-PBS. Store at -20C.

Species cross reactivity: Not tested.

Tested applications: Flow cytometry, IF, ELISA and IP.

Recommended dilutions:

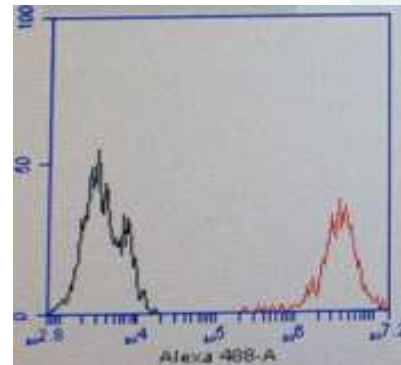
FACS – 1:1000

ELISA - 1: 500

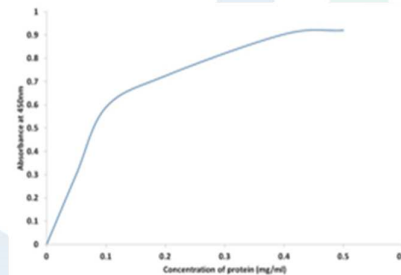
IP - 1:100

IF - 1:1000

Actual dilution should be determined by the end user.



FACS analysis of SGH_1004 antibody on SKBR3 cells (Red line).



ELISA analysis of SGH_1004 antibody on SKBR3 cell lysate.