

Anti-DDR1 monoclonal antibody

Cat # SGH_1005 (For research use only)

DDR1 (Discoidin Domain Receptor1) a receptor tyrosine kinase, along with DDR2, is involved in the regulation of key cellular processes like cell migration, cell proliferation, differentiation and survival. Cell surface expression of DDR1 can be detected by Flow cytometry and ELISA.

Source: Selection on recombinant human ECD (aaD21-T416) antigen protein using Phage display technology

Isotype: Human IgG Kappa with human Fc.

Purification: Affinity purified.

Concentration: 25ug per vial.

Storage: Antibody in 20% glycerol-PBS. Store at -20C

Species cross reactivity: Mouse.

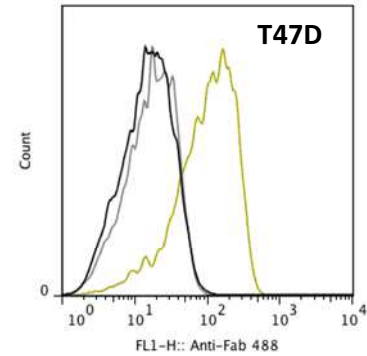
Tested applications: Flow cytometry and ELISA.

Recommended dilutions:

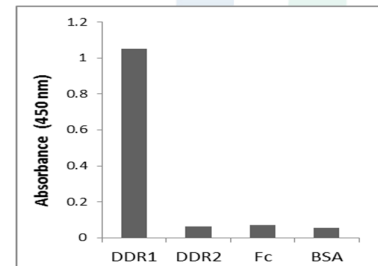
FACS – 1:1000

ELISA - 1: 500

Actual dilution should be determined by the end user.



FACS analysis of SGH_1005 antibody on T47D cells (Yellow line).



ELISA analysis of SGH_1005 antibody on T47D cell lysate.