

## Anti-DDR2 monoclonal antibody

Cat # SGH\_1006 (For research use only)

DDR2 (Discoidin Domain Receptor2) a receptor tyrosine kinase, along with DDR1, is involved in the regulation of key cellular processes like cell migration, cell proliferation, differentiation and survival. Cell surface expression of DDR2 can be detected by Flow cytometry and ELISA.

**Source:** Selection on recombinant human ECD (aaQ24-R399) antigen protein using Phage display technology.

**Isotype:** Human IgG Kappa with human Fc.

**Purification:** Affinity purified.

**Concentration:** 25ug per vial.

**Storage:** Antibody in 20% glycerol-PBS. Store at -20C

**Species cross reactivity:** Mouse.

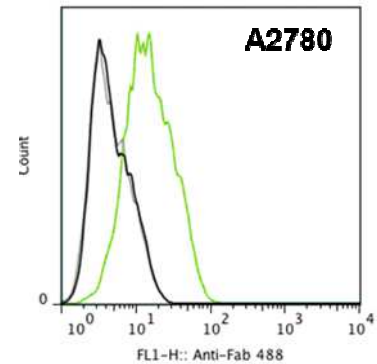
**Tested applications:** Flow cytometry and ELISA.

**Recommended dilutions:**

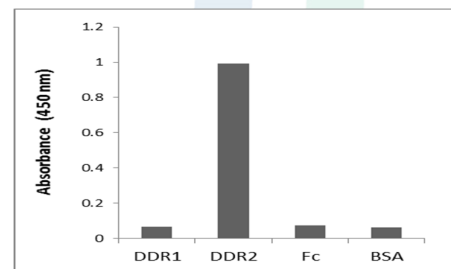
FACS – 1:1000

ELISA - 1: 500

Actual dilution should be determined by the end user.



FACS analysis of SGH\_1006 antibody on A2780 cells (Green line).



ELISA analysis of SGH\_1006 antibody on A2780 cell lysate.