

Anti- FGFR1c monoclonal antibody

Cat # SGH_1007 (For research use only)

FGFR1 (Fibroblast growth factor receptor 1) is a receptor tyrosine kinase. Activation is following ligand binding and dimerization, receptors are phosphorylated at specific tyrosin residues. Mutations in this gene is reported in syndromes including Pfeiffer syndrome and in several cancers including Lung cancer.

Source: Selection on recombinant human ECD (aaR22-E374) antigen protein using Phage display technology.

Isotype: Human IgG Kappa with human Fc.

Purification: Affinity purified.

Concentration: 25ug per vial.

Storage: Antibody in 20% glycerol-PBS. Store at -20C

Species cross reactivity: Mouse.

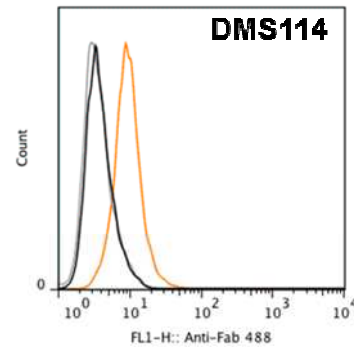
Tested applications: Flow cytometry and ELISA.

Recommended dilutions:

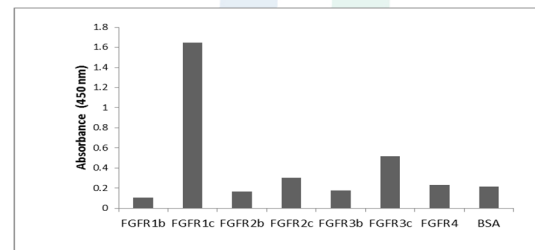
FACS – 1:1000

ELISA - 1: 500

Actual dilution should be determined by the end user.



FACS analysis of SGH_1007 antibody on DMS114 cells (Orange line).



ELISA analysis of SGH_1007 antibody on DMS114 cell lysate.